



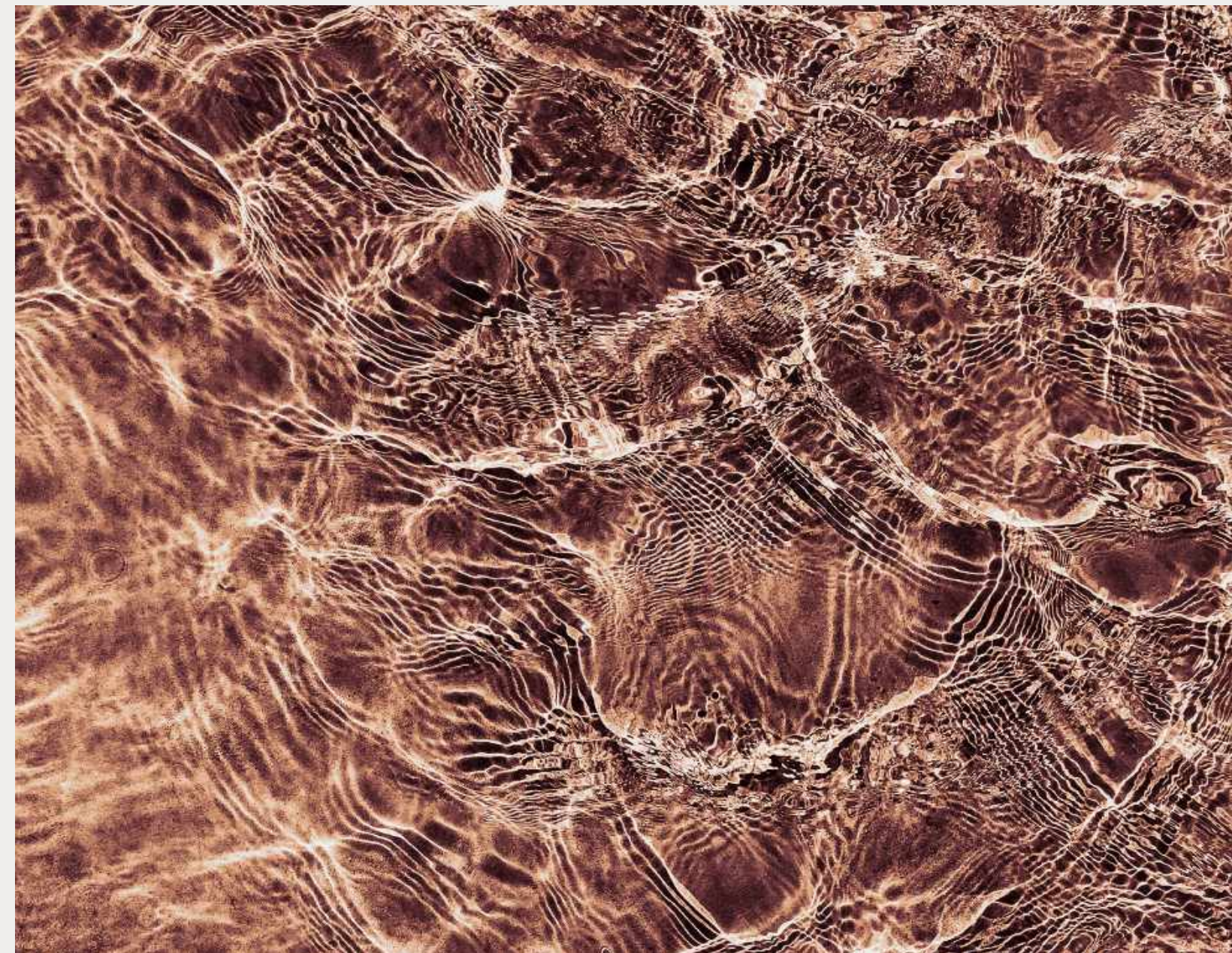
NAYAMĀ
BY
one

WELCOME TO A FASCINATING NATURAL ENVIRONMENT
THAT EMBRACES A NEW HABITAT IMAGINED BY

One
DEVELOPMENT GROUP



NAYAMA



01.

BEACH, JUNGLE & SEA.

The evolution of three paradises

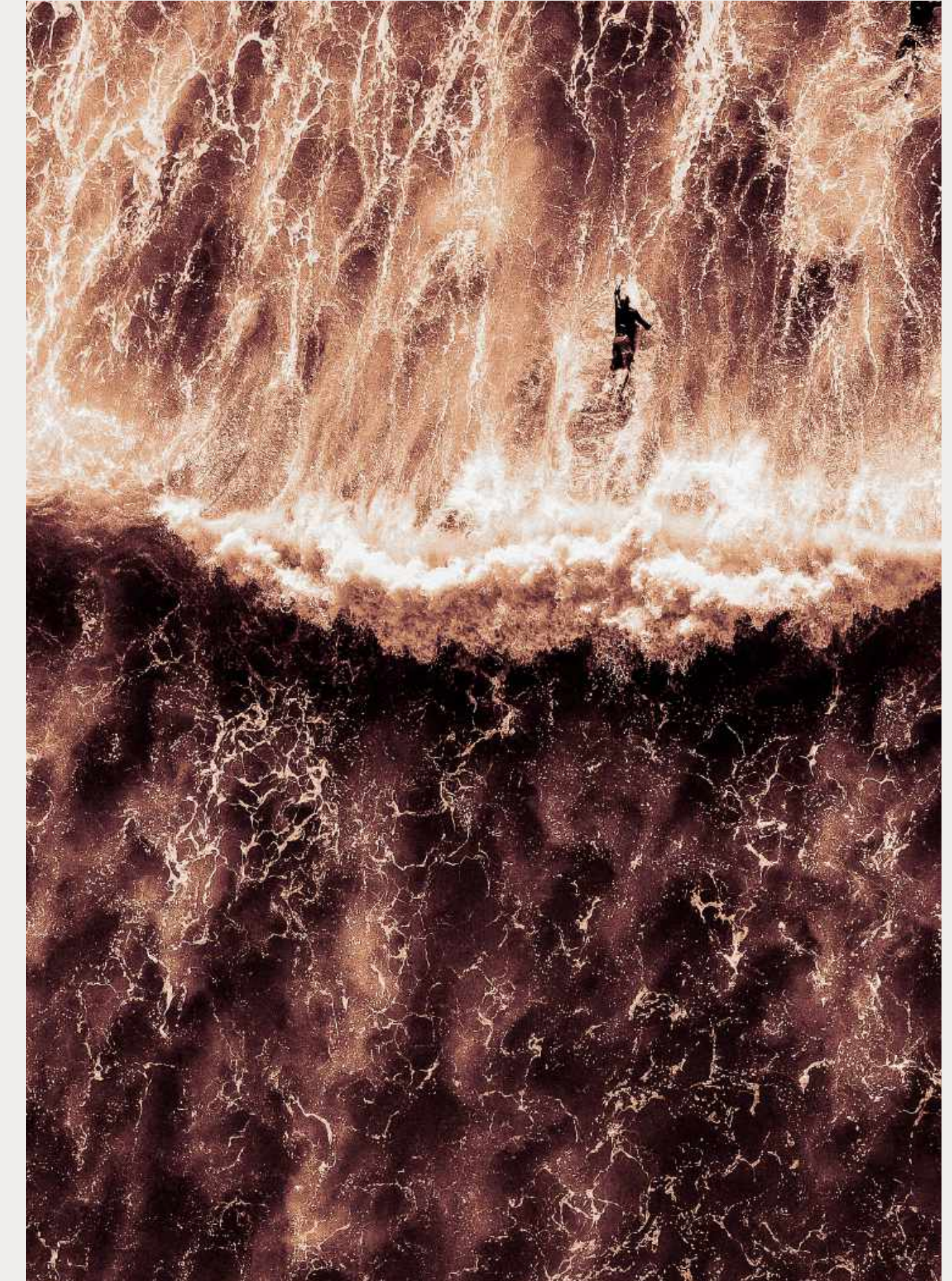
Three moments that compose the harmony of a destination



The richness of the Jungle



The warmth of the Beach



The depth of the Sea

02.
CO-CREATORS
OF AN UNPARALLELED VISION

one
DEVELOPMENT GROUP

Jsa

+



+

Cadena Concepts®





**ONE DEVELOPMENT
GROUP**

Mexican company focused on creating next generation real estate spaces and memorable experiences that transform the way people live, work and form communities.

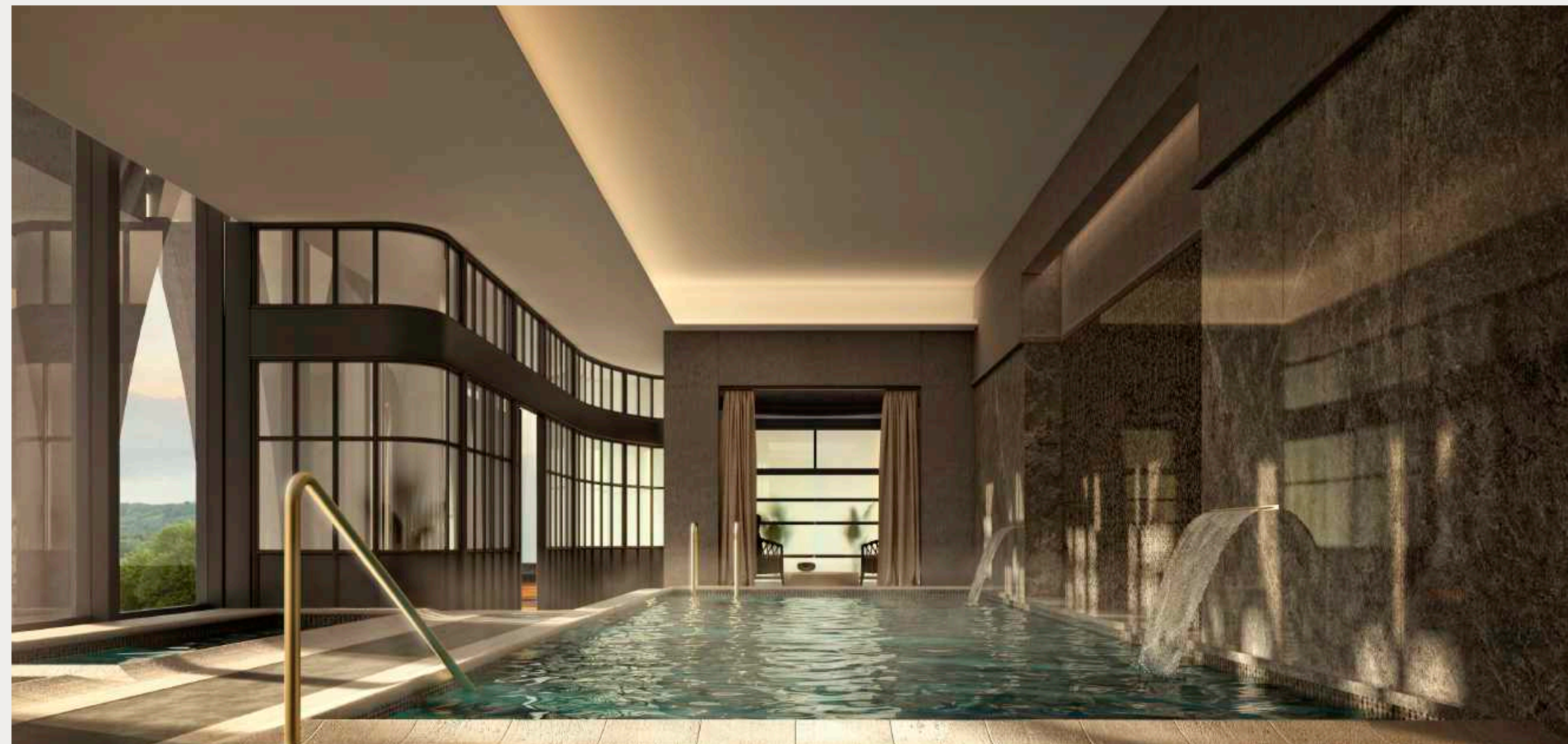
Our priority in every development is to deliver a positive impact on residents, users, visitors, investors, and the community. Three of our most relevant projects are: Arboleda, SOFIA, both in San Pedro Garza García, NL, El Gran in Monterrey, NL and NAYA in Punta de Mita, Nayarit



| *El Gran Ancira*



| *Roble 700*



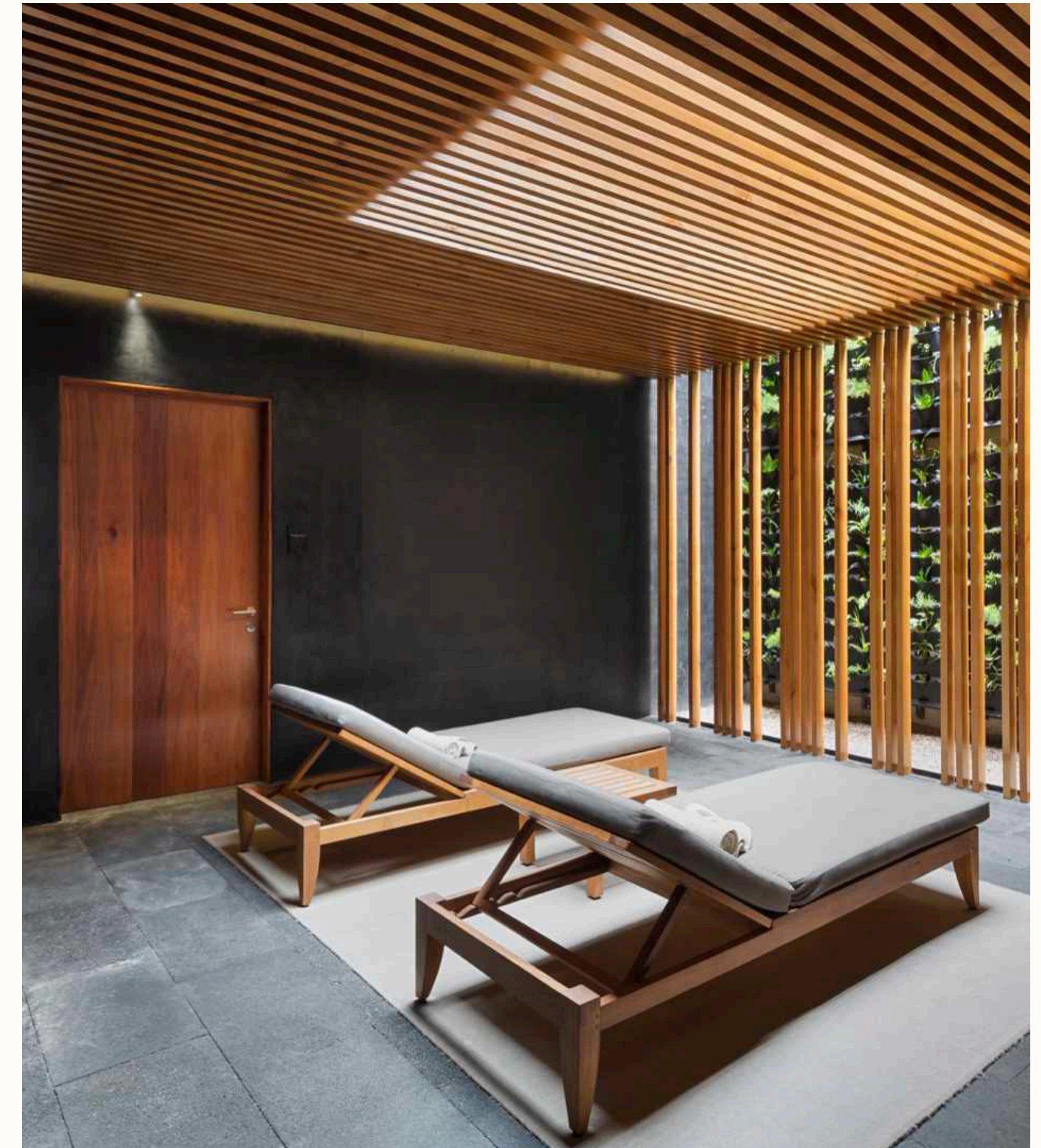
| *Luna*

JSa

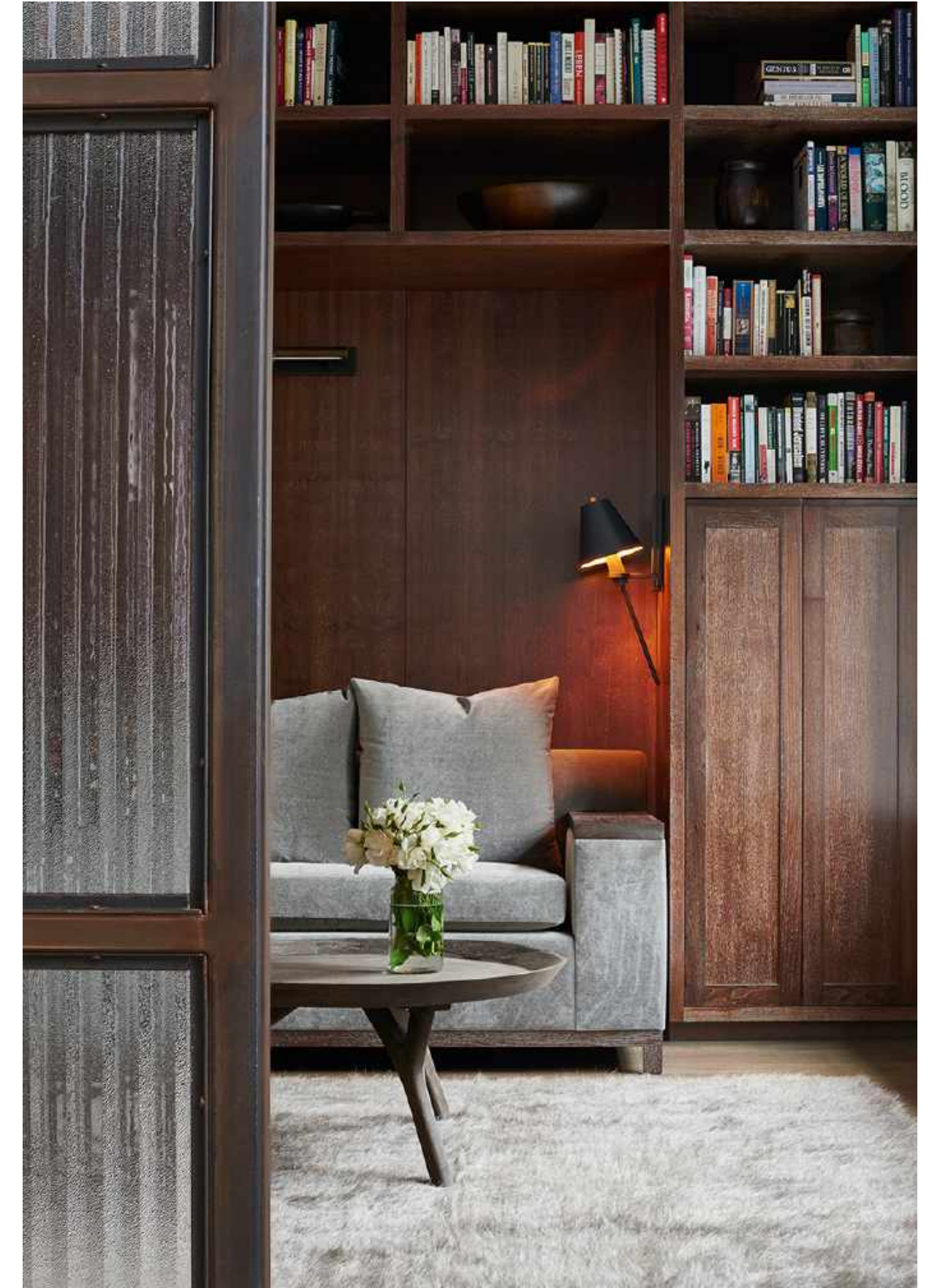
Mexican architecture studio led by the vision of **Javier Sánchez**. Using collective work processes, JSa has created and delivered unique projects such as Pujol, Hotel Carlota and The Cape in Los Cabos, Baja California.



| *The Cape*



| *SPA -The Cape*



MARKZEFF

New York-based design consulting firm that combines aesthetics, experience, and technology to integrate vitality into the world of personal and corporate design.

Through the fusion of architectural design, interior design, and brand communication, MARKZEFF is a creative resource that provides unique and original results.



CADENA CONCEPTS®

Cadena Concepts® is a multidisciplinary firm with more than 20 years of experience imagining solutions where design, innovation and creativity become real transformation tools; its multidisciplinary and collaborative approach is based on a methodology that solves problems from the convergence of science and intuition.

A team made up of artists, architects, designers, researchers and strategists, among others, creating new languages, forms and symbols associated with brands, spaces, products, projects, objects, places and people that translate into better human experiences.

03.

A CAPTIVATING NATURAL DESTINATION

Punta de Mita,
Bahía de Banderas

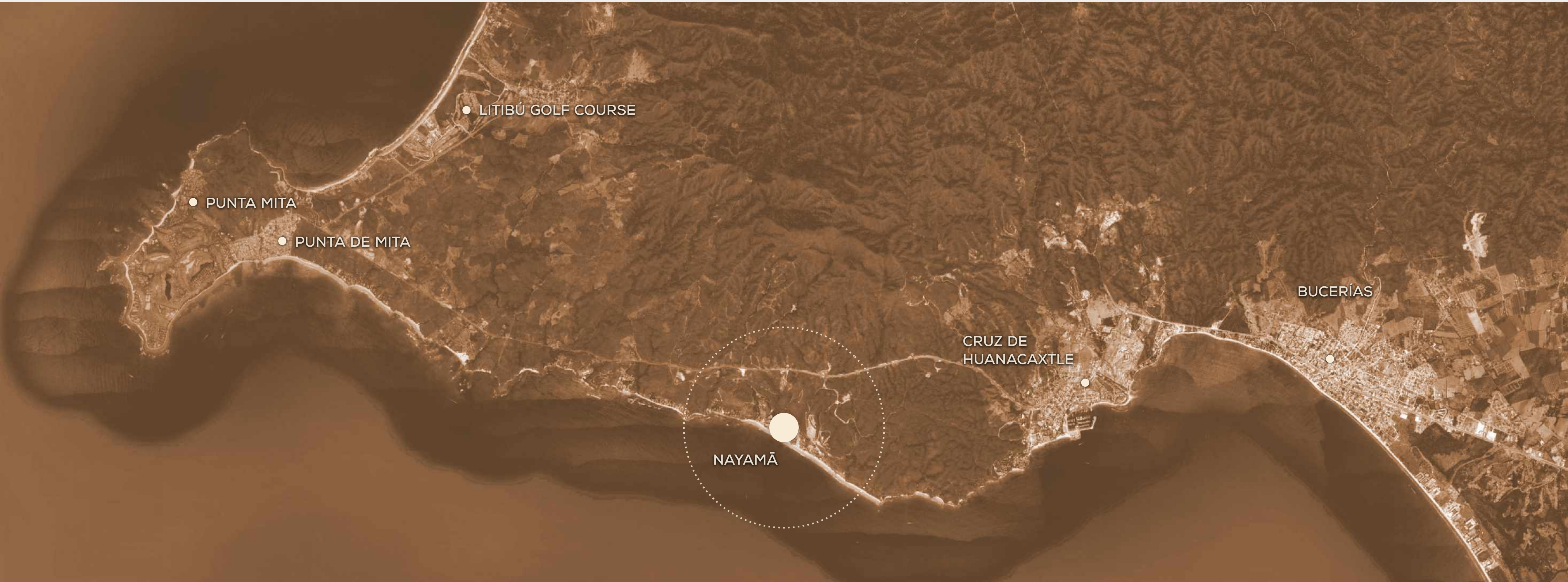


NAYAMĀ



Riviera Nayarit, Punta de Mita.

A peaceful white-sand peninsula, in complete tranquility facing of a wide turquoise-blue Pacific, that offers protection and refuge to those who seek to live unmatched adventures immersed in nature.





One of the most beautiful bays in the world: **Bahía de Banderas**; a captivating cove in the heart of the fascinating Pacific coast, Punta Mita is the heart of Riviera Nayarit, a stage for tourism with the highest expectations

NAYAMA





Wixárica Cosmovation

This paradise of exuberant natural riches and unexplored landscapes acquires a unique meaning when experienced and deciphered through the unique vision of the Wixárikas, the native culture of Nayarit

The Wixárikas act as one with their environment and honor simplicity and pureness: the virtue of nature and being immersed in it.

From this perspective a concept emerges that evokes the inherent authenticity of an unspoiled setting, waiting to be discovered.

NAYAMA

The connection between three paradises



04.
A HOME IN BALANCE WITH THE
ENVIRONMENT
Master Plan



| Full aerial view

Facing the immensity of the Pacific Ocean, the spirit of this wonderful place is woven from three essential moments, translating into an architectural vision that responds to its natural environment, a reflection that integrates to highlight the most elemental at every moment



Rediscover the Sublime

An honest, sensible and conscious proposal conformed
by **48 exclusive residences** and **12 villas** located within a
surface of **11.5 acres**

NAYAMĀ beats with a contemporary cadence, exalting the simplicity of nature in all its sophistication which translates into immersive comfort, abundant possibilities and experiences

An exuberant ecosystem of wellness, whose language is woven into the elemental principles of being and life







05.
WELLNESS ECOSYSTEM
Interiors





HABITAT

48 Exclusive Residences
12 Villas

Tower 1

4 Floors
 2 Residences per floor
 3 Bedroom residences
 3,767 sqft

Tower 2

4 Floors
 2 Residences per floor
 3 - 4 Bedroom residences
 3,767 sqft | 4,520 sqft

Tower 3

4 Floors
 2 Residences per floor
 4 Bedroom residences
 4,520 sqft

Tower 4

4 Floors
 2 Residences per floor
 4 - 5 Bedroom residences
 4,520 sqft | 5,920 sqft

Tower 5

4 Floors
 2 Residences per floor
 3 - 4 Bedroom residences
 3,767 sqft | 4,520 sqft

Tower 6

4 Floors
 2 Residences per floor
 3 - 4 Bedroom residences
 3,767 sqft | 4,520 sqft

Villa 1 y 2

2 Floors
 5 - 6 Bedroom villas
 8,611 sqft | 10,764 sqft

Villa 3 y 4

3 Floors
 5 Bedroom villas
 6,458 sqft | 6,997 sqft



| *Master Bedroom*

N.Y.A.M.T.







| Interior, Villa 2





| Exterior, Villa



| Interior, Villa 2



06.
AMENITIES



AMENITIES

1. Arrival NAYAMĀ
2. Spa
3. Kids club
4. Cinema
5. Natural pool
6. Beach club
7. Restaurant
8. Sports courts
9. Fire pit
10. Teens lounge
11. Gym
12. Yoga & wellness

ADDITIONAL EXPERIENCES

- 24/7 Hop on - hop off transport
- Concierge
- Seasonal catering
- On-site maintenance
- Guardhouse
- Private security
- Valet parking
- Beach services (towels etc.)
- Massage, fitness and yoga instructors on demand
- Babysitting services
- Housekeeping
- Transportation to & from the airport





| Spa



| Kids Club



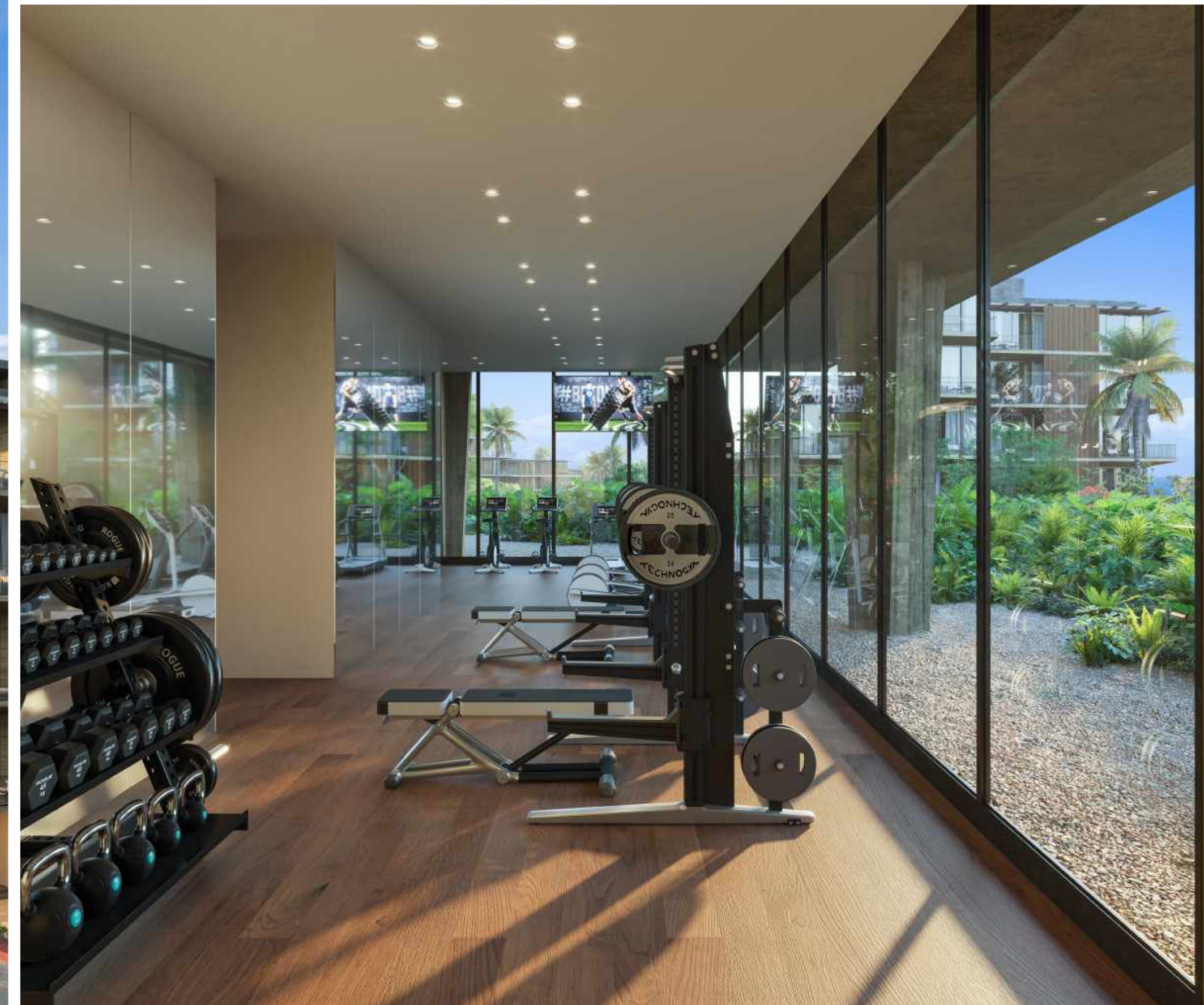
| Restaurant



| *Beach Club*



| Sports courts



| Gym



| Teens lounge



NAYA MĀ
BY
one

Carretera Cruz de Huanacastle a Punta de Mita km 7, 63734 Bahía de Banderas, Nayarit.

C. info@naya.mx | T. (81) 1477 3030 | naya.mx